

pond-dipping

TOP 15



www.wildlife-man.co.uk



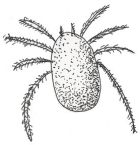
WATER FLEA

Eats: microscopic algae
Eaten by: aquatic insects
Weird fact: some water fleas turn from girls (females) to boys (males) in spring



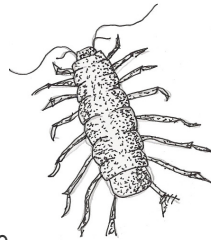
BLOODWORM

Eats: dead plants and animals
Eaten by: newts, fish, water boatman
Weird fact: they are red because they have oxygen-rich blood (like humans!)



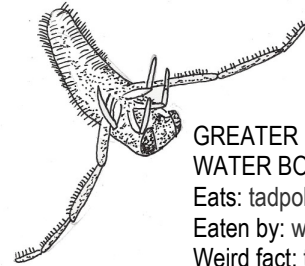
WATER MITE

Eats: dead plants and animals
Eaten by: water boatmen
Weird fact: they are actually a type of tiny spider



WATER HOG LOUSE

Eats: dead plants and animals
Eaten by: water spiders
Weird fact: closely related to woodlice



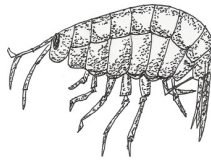
GREATER WATER BOATMAN

Eats: tadpoles, water mites
Eaten by: water beetles, fish
Weird fact: they eat through a sharp tube that they stick into tadpoles, before sucking out the juices



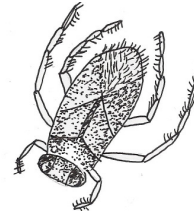
CADDISFLY NYMPH

Eats: algae and dead plants
Eaten by: fish
Weird fact: they hide in sticks or make nests out of pond material.



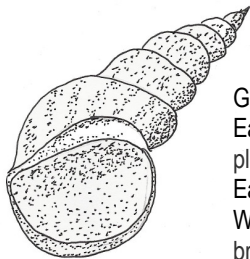
FRESHWATER SHRIMP

Eats: dead plants
Eaten by: fish
Weird fact: closely related to crabs and lobsters



LESSER WATER BOATMAN

Eats: tadpoles, fly larvae
Eaten by: water beetles and fish
Weird fact: they can fly from pond to pond in summer



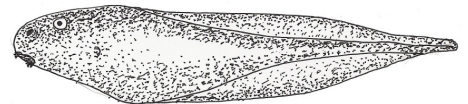
GREAT POND SNAIL

Eats: algae and dead plants
Eaten by: birds
Weird fact: can breathe through their skin.



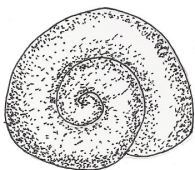
DAMSELFLY NYMPH

Eats: small insects and tiny tadpoles
Eaten by: birds and fish
Weird fact: they live in ponds for up to two years, then climb out of the pond and fly away.



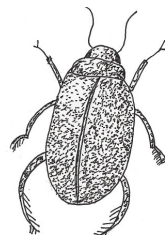
FROG TADPOLE

Eats: algae when small, then dead animals
Eaten by: birds, dragonfly nymphs, water boatman
Weird fact: when tadpoles turn into frogs, they reabsorb their tails into their bodies.



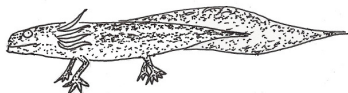
RAMSHORN SNAIL

Eats: algae
Eaten by: birds and fish
Weird fact: they can store air in their shells so they can breath underwater



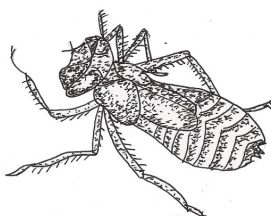
WATER BEETLE

Eats: tadpoles and water mites
Eaten by: birds, fish, newts
Weird fact: many water beetles carry an air bubble around with them, which provides them with an air supply underwater



NEWT TADPOLE

Eats: waterfleas and water mites
Eaten by: dragonfly nymphs
Weird fact: they grow their front legs first, then their back legs. This is opposite to frogs and toads



DRAGONFLY NYMPH

Eats: tadpoles and fish
Eaten by: birds and big fish
Weird fact: their mouth-parts can flick forward to impale small pond animals, which they then chew into bite-size bits

REMEMBER!

1. Don't put your fingers in the water or disturb the animals in the tray

2. Never play around water without an adult.

