

# pond-dipping TOP 15



www.wildlife-man.co.uk



**WATER FLEA**  
Eats: microscopic algae  
Eaten by: aquatic insects  
Weird fact: some water fleas turn from girls (females) to boys (males) in spring

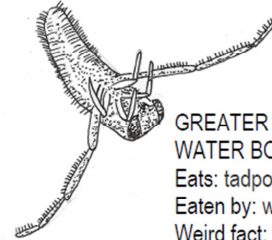


**FLATWORM**  
Eats: dead animals **Score: 5**  
Eaten by: not much!  
Weird fact: if chopped in half they can grow two new bodies.



**Score: 2**

**BLOODWORM**  
Eats: dead plants and animals  
Eaten by: newts, fish, water boatman  
Weird fact: they are red because they have oxygen-rich blood (like humans!)



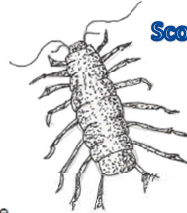
**Score: 5**

**GREATER WATER BOATMAN**  
Eats: tadpoles, water mites  
Eaten by: water beetles, fish  
Weird fact: they eat through a sharp tube that they stick into tadpoles, before sucking out the juices



**Score: 3**

**WATER MITE**  
Eats: dead plants and animals  
Eaten by: water boatmen  
Weird fact: they are actually a type of tiny spider



**Score: 2**

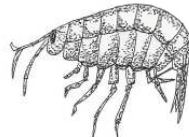
**WATER HOG LOUSE**  
Eats: dead plants and animals  
Eaten by: water spiders  
Weird fact: closely related to woodlice



**Score: 7**

**CADDISFLY NYMPH**  
Eats: algae and dead plants  
Eaten by: fish  
Weird fact: they hide in sticks or make nests out of pond material.

**Score: 6**



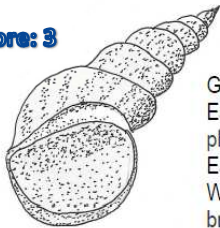
**FRESHWATER SHRIMP**  
Eats: dead plants  
Eaten by: fish  
Weird fact: closely related to crabs and lobsters



**Score: 5**

**LESSER WATER BOATMAN**  
Eats: tadpoles, fly larvae  
Eaten by: water beetles and fish  
Weird fact: they can fly from pond to pond in summer

**Score: 3**

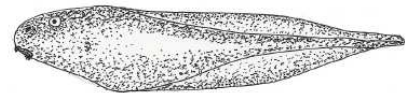


**GREAT POND SNAIL**  
Eats: algae and dead plants  
Eaten by: birds  
Weird fact: can breathe through their skin.



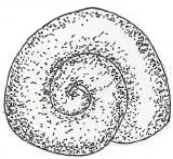
**DAMSELFLY NYMPH**  
Eats: small insects and tiny tadpoles  
Eaten by: birds and fish  
Weird fact: they live in ponds for up to two years, then climb out of the pond and fly away.

**Score: 6**

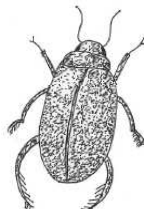


**FROG TADPOLE**  
Eats: algae when small, then dead animals  
Eaten by: birds, dragonfly nymphs, water boatman  
Weird fact: when tadpoles turn into frogs, they reabsorb their tails into their bodies.

**Score: 3**

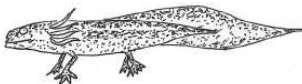


**RAMSHORN SNAIL**  
Eats: algae  
Eaten by: birds and fish  
Weird fact: they can store air in their shells so they can breathe underwater



**Score: 5**

**WATER BEETLE**  
Eats: tadpoles and water mites  
Eaten by: birds, fish, newts  
Weird fact: many water beetles carry an air bubble around with them, which provides them with an air supply underwater



**NEWT TADPOLE**  
Eats: waterfleas and water mites  
Eaten by: dragonfly nymphs  
Weird fact: they grow their front legs first, then their back legs. This is opposite to frogs and toads



**Score: 8**

**DRAGONFLY NYMPH**  
Eats: tadpoles and fish  
Eaten by: birds and big fish  
Weird fact: their mouth-parts can flick forward to impale small pond animals, which they then chew into bite-size bits

## REMEMBER!

1. Don't put your fingers in the water or disturb the animals in the tray

2. Never play around water without an adult.

